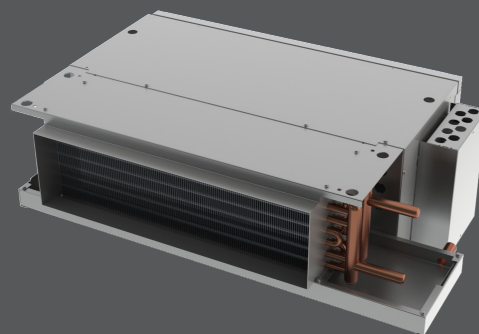


## HBP

- Performance AHRI Certified to Standard 440
- ETL-Listed. Constructed in compliance with ANSI/UL 1995 Standard
- All casing sheet metal components are fabricated of 18GA G90 galvanized steel
- Return air plenum thermally and acoustically insulated covering the motor(s) / blower(s) assembly to reduce sound levels from the unit
- High-efficiency 2-row coil suitable for a 2-pipe system
- Coil manual air vent
- 1" thick disposable filter
- Multi-speed motor of the permanent split capacitor (PSC) type
- Double Width Double Inlet (DWDI) direct driven blowers of the whisper quiet type
- Controls installed in a single control box suitable for single power supply
- Single wall condensate pan in galvanized steel, thermally protected on the outside\*



HBP

- 1" discharge air flange
- 1" return air flange
- Anti-Vibration Mounts for field installation



condos hotels / motels

### AVAILABLE MODEL:

HBP

### OVERVIEW

Factory assembled, horizontal blow-thru ducted fan coils designed for concealed installations above ceilings with ducted air discharge and suitable for projects such as hotels, motels, condominiums and general commercial application.

### OPTIONAL FEATURES INCLUDE

- 3-, 4- And 5-row coils for 2-pipe systems
- Single block 2, 3 and 4 rows CW with 1 row re-heat or pre-heat coils for 4-pipe system applications (5 rows max)
- Single block 2 and 3 rows CW with 2 rows re-heat or pre-heat for 4-pipe system applications (5 rows max)
- Automatic coil air vents
- LH or RH entry pipe connections
- Filter option include:
  - » 1" high-efficiency pleated filters
  - » 1" washable filters
- Bottom or rear return air and filter location
- Filter supports with slides or clips
- Filter removal from LH/RH, bottom and rear
- Cabinet liner in 1/2" foil face
- Motor voltage suitable for 208V, 230V or 277V/1Ph/60Hz power supplies
- Motor in-line quick disconnect (Not available on bottom return filter)
- Thermostat and Accessories [Accessories on page V71]
- Single power supply disconnect switch and fuses



See website for Specifications

- Automatic 2-pipe changeover switch for heating and cooling applications
- Electric heaters
- HW standby electric heater auto changeover switch
- Valve Packages [Accessories on page V71]
- Condensate pan options:
  - » Single wall condensate pan manufactured in 20GA 304 Stainless Steel
  - » Double wall construction consisting of outer and inner skins
  - » Condensate pan overflow safety switch
  - » Condensate pan safety overflow connection



A Participating Corporation in the AHRI 440 Certification Program